



2025 Radiology Catalog



Radiology Protection, Supplies & Storage Solutions



Stevens-Moon Radiology is Dedicated to Quality and Customer Service at an Affordable Price. For over 25 years the RF Design staff has been passionate about making quality garments that last! RF Design became part of the Stevens-Moon Family in 2019 after a long relationship with Stevens-Moon as it's leading distributor. SMR offers fully customizable aprons with thousands of combinations and logo/text embroidery options.



Protective Materials

Bi-Layer Lead Free

Premium protection, ultra lightweight, superior durability, and environmentally friendly.

Ultra-Light Lead Free

Our standard lead free option is lightweight, durable, and environmentally friendly.

Light Lead

Quality and Value at its best! A lightweight core blend that is an excellent choice for durability and protection.

Protection Levels

Standard Aprons are 0.5mm in the front and 0.25mm in the back for Full Wrap and Vest and Skirt Aprons. Standard Frontal Aprons offer 0.5mm of protection in the Front. Optional 0.25mm and 0.35mm protection is available upon request, but please check local and state regulations before ordering.

Sizing Charts

Vest (Chest Size)		
Sizes	Men's	Women's
Small	35-38"	31-34"
Medium	39-41"	35-38"
Large	42-45"	39-42"
X-Large	46-48"	43-46"

Skirt				
Sizes	Men's		Women's	
	Waist	Max Ht.	Hips	Max Ht.
X-Small	-	-	34-36"	5'3"
Small	28-31"	5'6"	37-38"	5'3"
Medium	32-35"	5'8"	39-41"	5'5"
Large	36-39"	6'0"	42-44"	5'8"
X-Large	40-42"	6'3"	45-46"	6'0"

Front-Protection Garments, Wrap Style & Atten-U-Wrap						
Sizes	Men's			Women's		
	Length	Chest	Max Ht.	Length	Chest	Max Ht.
Small	36"	36-38"	5'6"	34"	33-34"	5'3"
Medium	36"	39-42"	5'8"	36"	35-37"	5'5"
Large	39"	43-45"	6'0"	37"	38-41"	5'8"
X-Large	41"	46-48"	6'3"	40"	42-45"	6'0"



The SMA 600 Pro Our Best Selling Apron!

Adjustable Breakaway Shoulders give a custom fit in a standard size apron and add Surgical Drop Apron capability. Elas – T – Back adds support that helps distribute weight from the shoulders and hips. Available in all interior, exterior and trim colors.

Customization

Scan QR Code to See Patterns!



(Note: Some patterns shown in catalog may be discontinued, please refer to QR code to see updated patterns)

Frontal Aprons

V400

Wide nylon panels cross in the back and Velcro to the front of the garment for quick and easy removal.

Optional break-away shoulders available.



V400 Back

SB500

This popular front coverage apron has a six inch wide elastic belt which offers excellent back support and a high degree of comfort. A two inch shoulder strap is also standard for additional comfort and support.



SB11500 Back

E100

One inch webbing crosses in the back and ties in the front. This cost-effective style is popular when only front protection is required.



E100 Back



Frontal Aprons (cont'd)

DA300

Designed for surgical settings, this apron has no arm holes, so releasing the Velcro allows it to drop away without breaking scrub. Drop-away shoulders are available on any of our front-protecting garments.



DA300 Back

B200

Wide back panels for comfort and support, this apron crosses in back and secures in front of the apron with two inch webbing and side release-buckles.



B200 Back



EB600

The back panels of this garment have six inch elastic supports sewn in for added back support and comfort. A shoulder strap helps keep the apron secure in the shoulder area. Available in Velcro or buckle closure.



EB600 Back



EBB600
Buckle Style



Vest/Skirt Combinations

Three vest styles are available: The Standard Vest (right) includes both Velcro and buckles for quick release and comfort. The Elas-T-Vest (below) features two elastic panels which cross in back and Velcro to the front of the apron. The Support Vest (below) features a wide six-inch belt which helps support the lower back and takes weight off the shoulders.



VS700

With this popular garment, weight is evenly distributed between the shoulders and hips for maximum comfort during long procedures.



VS1700

Offering additional support for your lower back as well as relieving weight on your shoulders, this vest features a six inch elasticized belt.



VS2700

The quick-release functionality of this standard vest is built for comfort. The panels cross in the back and secure to the front of the apron. Requires Custom Measuring.



VS700 Back

One Piece Wrap Around



WA800 Back

WA800

For the greatest protection, this traditional wrap style covers both front and back. A six inch elastic belt gives support to the lower back while taking weight off the shoulders. This garment secures with both Velcro and buckles for a secure closure.



LW900 Back

LW900

This patented design affords a six inch wide elastic belt and overlapping back panels for full front and back coverage. It is quite popular because of the easy on-and-off feature that it offers. Requires Custom Measuring.

One Piece Wrap Around (cont'd)

MW1000 Maternity

Matern-U-Wrap features added adjustability by providing extra Velcro at the shoulder and sides, allowing it to increase as the mother grows. Features a removable 0.5mm lead insert in abdominal area. Available in Regular and Large Sizes.



Accessories

Stave-Lock Belt

Designed to be worn under lead for added back support and comfort. The eight inch plastic stave in the back and adjustable elastic make this product ideal for those with lower back discomfort.

Small	ST-1	30" – 34"
Medium	ST-2	35" – 41"
Large	ST-3	42" – 46"
XLarge	ST-4	47" – 56"
XXLarge	ST-5	57" – 66"

Stretch Belt

Standard Belt used on all apron styles. It comes with a Velcro loop to attach to aprons.

Small	SB-S
Medium	SB-M
Large	SB-L
XLarge	SB-XL



Dental Aprons

Comes with 2 loop hangers and standard color is Navy blue. Custom colors and embroidery available upon request.



D19228

D2328C

Pediatric

D19228

Pediatric W/Collar

D19228C

Adult

D2328

Adult W/Collar

D2328C

Half Aprons

Standard apron design has overlapping two-inch Velcro. Also available with buckle closure.

Child	PA-1	12" L x 14" W
Small	PA-2	14" L x 16" W
Medium	PA-3	16" L x 18" W
Large	PA-4	24" L x 24" W

Set of 4 PA-5
One each size

Maternity PA-6
18" L x 30" W



Accessories (cont'd)

Thyroid Collars

Available in all popular colors (0.5mm protection). Can also be purchased with one-inch strap and ring to attach to aprons. Custom embroidery available upon request.



TC-2



TCB-2

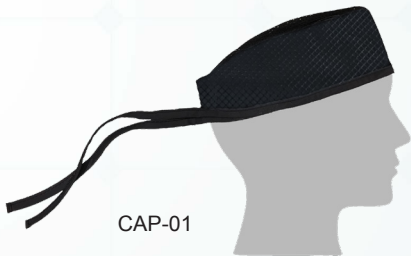


TCV-2

Standard Collar	TC-1
Standard Collar W/Strap & Ring	TC-2
Buckle Collar	TCB-1
Buckle Collar W/Strap & Ring	TCB-2
Visor Collar	TCV-1
Visor Collar W/Strap & Ring	TCV-2

Caps

Available in all popular colors. Tie closure in rear. Custom sizing and embroidery available upon request.



CAP-01

Apron Transport Bag

A perfect way to transfer your lead apron! Comes with roller to make sure your apron fits perfect in the bag and does not wrinkle your apron. Has a carry shoulder strap and top cinches down to make sure apron does not come out.



BD-285

Apron Sleeves

Sleeves can be added to all of our aprons. They can be permanently sewn on or attached with button snaps to be removable.



SL-1

Ask us about our Phase Change Cool Pack Technology!

Simply place the phase change (cool) packs in a freezer for 20 minutes, or place in the refrigerator for 40 minutes, and then place in the inside pockets of the vest for hours of cooling relief. The cool packs will maintain a constant 58 degrees Fahrenheit, which provides cooling for the core body temperature.



Available in a stand-alone vest or built into our X-Ray Aprons



MULTI-SURFACE CLEANER AND DISINFECTING WIPES

Kills Bacteria & Viruses including SARS & Human Coronavirus. Bleach Free, Fragrance Free, Streak Free & Non-Scratch.

Easy to Use

Clean. Disinfect. Deodorize.

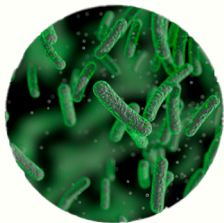
Clean

Spray on surface and rub down with clean cloth or towel to scrub off stains.

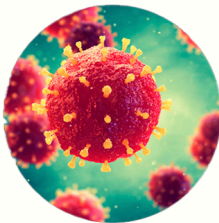
Disinfect and Deodorize

1. Spray to wet entire surface.
2. Let air dry.
3. If any wetness remains after 10 minutes, wipe dry.

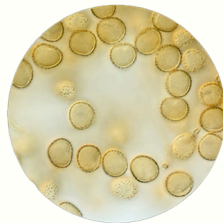
Specifically designed for X-Ray Aprons including vinyl, plastic, stainless steel, porcelain and other hard medical surfaces. Kills odor causing microorganisms. Effectively inhibits growth of mold and mildew.



Bacteria



Viruses



Fungi

BioXCo X-Ray Apron Cleaner

Kills 99.9% of Bacteria, Viruses, Molds and Fungi Including

- Norovirus
- MRSA
- E. coli

And It's Safe

- Bleach Free
- Phosphate Free
- Fragrance Free



Germicide. Fungicide. Virucide.

Product Code	Description	Size
BXC-XRAY-180-WIPES	BioXco X-Ray Apron Wipes	1 canister - 180 ct.
BXC-XRAY-6PK-WIPES	BioXco X-Ray Apron Wipes	1 case - 6 canisters

Product Code	Description	Size
BXC-XRAY-032-RTU	BioXco X-Ray Apron Cleaner	1 bottle - 32 oz
BXC-XRAY-6PK-RTU	BioXco X-Ray Apron Cleaner	1 case - 6 bottles



The Easiest Apron Tracking Platform



Accessible Anywhere

No software to buy or maintain.



Any Device

Works with all computers, Apple & Android smartphones & tablets.



Intelligent Reports

Easily export reports and data to any computer or to off site inspectors and auditors

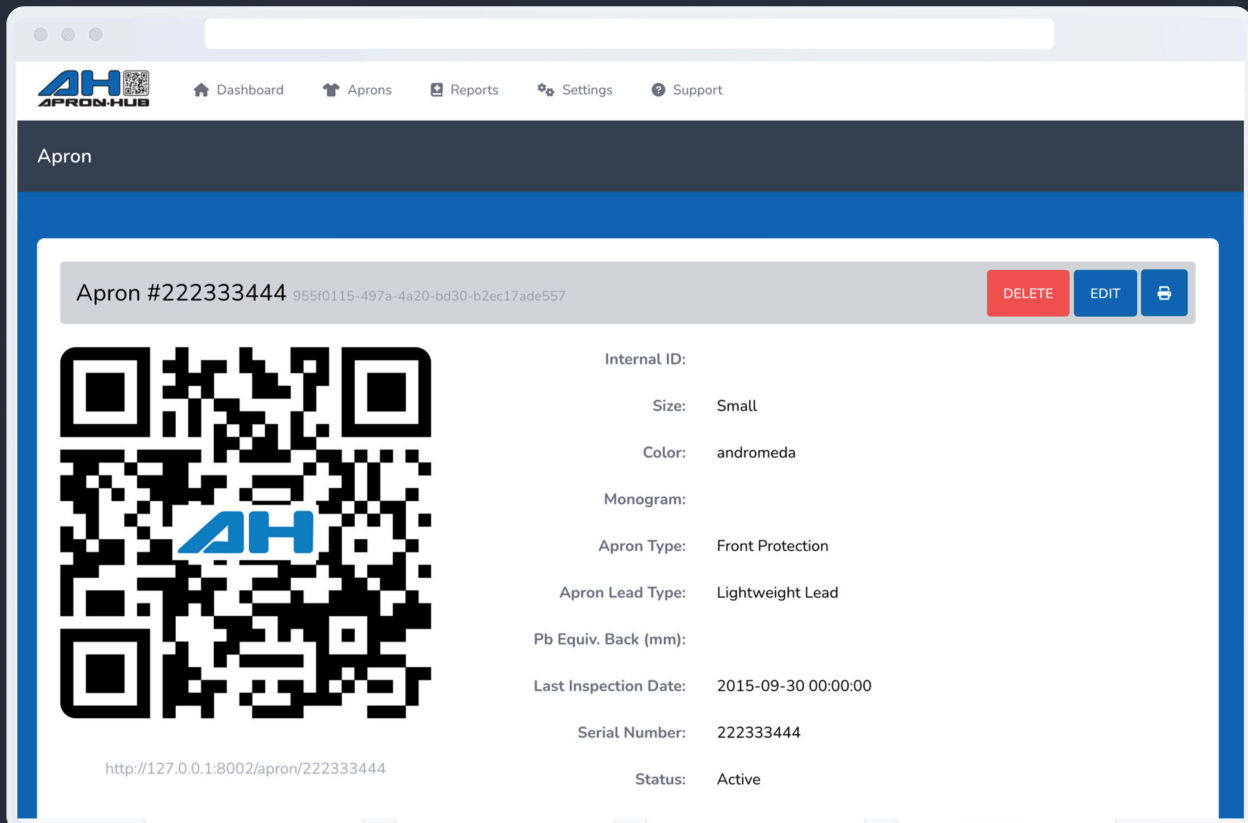


No Extra Hardware Required

No special scanning equipment required.

Apron Hub is designed to quickly and easily meet the highest QA and safety standards for your facility.

Apron Hub is comprehensive web-based smart inventory management system for radiation protection products including aprons, shields, and other apparel. Upload protective garment data (from any manufacturer) into your unique Apron Hub platform. Easily maintain and track inventory history, location, and user information using customizable reports. Receive proactive notifications for upcoming inspection dates.



Radiation Glasses and Goggles

Stevens-Moon Radiology offers a complete line of radiation protection eyewear. Available in prescription and non-prescription lenses that fit into the latest frames where performance and style meet.

Stevens-Moon Radiology also offers a complete line of Laser Safety Eyewear.

Stevens-Moon Radiology also offers designer eyewear, including popular frames from Nike, Oakley, and Wiley.

WILEY X



SMA-ACPEA09F (Black)

NIKE



SMA-NIKE-BRZN (Black / Blue)

OAKLEY



SMA-OAK-HLBRK (Black / Red)

Wraparound Radiation Glasses

SMA-EGM-BK (Black)



SMA-EGM-GY (Gray)



SMA-EGM-R (Red)



SMA-EGM-W (White)



SMA-208-BK (Black)



SMA-208-S (Silver)



SMA-208-BY (Blue/Yellow)



SMA-208-TA (Taupe)



SMA-208-R (Red)



SMA-208-PG (Purple/Grey)



SMA-208-PK (Pink)



SMA-15011



SMA-808-BK (Black)



SMA-808-R (Red)



SMA-808-S (Silver)



SMA-506-BK (Black)



SMA-506-TK (Tortoise)



SMA-703-CG (Charcoal Gray)



SMA-703-BF (Brown Fade)



SMA-703-BK (Black)



SMA-901-BK (Black)



SMA-1171-B (Black)



SMA-1171-R (Red)



SMA-1205-BK (Black)



SMA-1205-BL (Blue)



SMA-1362-BK (Black)



SMA-1387-BK (Black)



SMA-P820-BK (Black)



SMA-P820-S (Silver)



SMA-116-BK (Black)



SMA-116-S (Silver)

Wraparound Radiation Glasses (cont'd)



SMA-OP-23
(Black)



SMA-OP-23
(Blue)



SMA-OP-30
(Black Tortoise)



SMA-OP-30
(Black)



SMA-Q200
(Black)



SMA-Q100
(Black)



SMA-Q300
(Black)



SMA-MX30-BK
(Black)



SMA-MX30-BL
(Blue)



SMA-MX30-R
(Red)



SMA-MX30-S
(Silver)



Scan For Laser
Eyewear!

Fitover Radiation Glasses

SMA-33-BK
(Black)



SMA-33-W
(White)



SMA-33-T
(Tortoise)



SMA-66-BK
(Black)



SMA-66-S
(Silver)



Metal Radiation Glasses



SMA-600-P
(Pewter)



SMA-600-G
(Gold)



SMA-100-B K
(Black)



SMA-100-BN
(Brown)



SMA-525



SMA-202-GM
(Gunmetal)



SMA-320-CP
(Copper)



SMA-320-GM
(Gunmetal)



SMA-400-BK
(Black)



SMA-700-GM
(Gunmetal)



SMA-500-G
(Gold)



SMA-500-GM
(Gunmetal)



SMA-554-BK
(Black)



SMA-554-G
(Gold)



SMA-202

Economy Radiation Glasses



SMA-206-YBS
(Black/Yellow/
Smoke)



SMA-52-T
(Tortoise)



SMA-52-BKBL
(Black/Blue)



SMA-52-BK
(Black)

Economy Radiation Glasses (cont'd)



SMA-206-BY
(Black/Yellow)



SMA-206-B
(Brown/Orange)



SMA-70-PC
(Black)



SMA-F10-CLR
(Clear and Black with Yellow Accents)



SMA-F10-BY
(Black with Yellow Accents)



SMA-F10-BB
(Black with Blue Accents)



SMA-230-R (Red)



SMA-375-BK
(Black)



SMA-375-T
(Tortoise)

Radiation Goggles & Faceshields



SMA-55
(Gray/Blue)



SMA-RK2

Gloves and Shields

Panorama Shield 400

Lead-impregnated acrylic suspended from a dual adjustable headpiece. The shield can be positioned at any angle to the face to minimize scatter radiation. The front lens is equivalent to 0.75Pb.

Panorama Shield 450

Providing the same advantages as the 400, but with coverage for the entire face and thyroid area.



400



Porta-Shield

A sturdy mobile base makes this lead barrier easy to move. The lead portion is available in three sizes.

PS-01
18" L x 24" W

PS-02
36" L x 24" W

PS-03
48" L x 24" W



Sterile Radiation Reducing Gloves

Available in either 0.22mm or 0.30mm thickness. Sizes from 6 to 9, with half sizes available.

RR-100 0.22mm
RR-200 0.30mm



RR-100, RR-200

Seamless Lead Vinyl Gloves

The most popular style is 15" one-piece dip-molded vinyl-covered glove. It has a foam liner and is available in pairs or single gloves. Available in Dark Blue and Burgundy. 0.5mm PbEquiv. Model 100V



100V

Mobile Lead Barriers

Transparent/clear upper section with x-ray protective, leaded glass window. Opaque lower section of solid, leaded x-ray protection with contoured sides. Has a locking caster system for easy mobility.



With 24" X 30" Window
SMA-2430

Opaque Mobile Leded Barriers

Steel Barriers, Portable, Leded Steel, Nylon Shields, Table Shields, Leded Glass

With 10" X 12" Window
SMA-1012



With 24" X 36" Window
SMA-2436-S



With 30" X 48" Window
SMA-3048



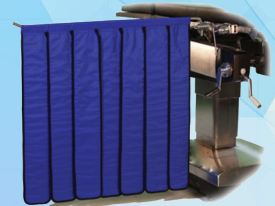
With 30" X 60" Window
SMA-3060



With 20" X 24" Window
SMA-2024-N

Lead Table Shield

Full 180° Pivot & Pass Through Pleating
SMA-LTS-3636



36" X 36" panel

Part Number	Barrier Size
SMA-1012-2472	24" x 72"
SMA-1012-2484	24" x 84"
SMA-1012-3072	30" x 72"
SMA-1012-3084	30" x 84"
SMA-1012-3672	36" x 72"
SMA-1012-3684	36" x 84"
SMA-1012-4572	45" x 72"
SMA-1012-4584	45" x 84"

With 36" X 48" Window
SMA-3648



With 36" X 72" Window
SMA-3672

Heavy Duty Mobile Shield

Adjustable from 36" to 58"
SMA-MB200404-PVC



24" X 24" panel

Retractable Cable Lock

30-inch Retractable Steel Cable. 3 digit code, create your own passcode!



Heavy Duty Portable Apron Hanger

Portable apron hanger with carry handle. Holds up to 180lbs. Made in USA!



Aluminum L&R X-Ray Markers – Vertical

High-quality radiographic film identification markers to mark X-Ray films. The L&R letters to indicate left and right are color coded, with L being blue and R red.



Vinyl Sandbags

Square

5 lbs	9" x 9"	SMR-SB-05S-BLK-ST
7 lbs	10" x 10"	SMR-SB-07S-BLK-ST
10 lbs	11" x 11"	SMR-SB-10S-BLK-ST

Rectangle

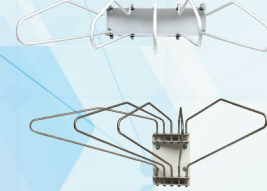
1 lbs	4" x 5"	SMR-SB-01R-BLK-ST
2 lbs	4" x 9"	SMR-SB-02R-BLK-ST
3 lbs	5" x 9"	SMR-SB-03R-BLK-ST
5 lbs	6" x 12"	SMR-SB-05R-BLK-ST
7 lbs	6" x 14"	SMR-SB-07R-BLK-ST
10 lbs	7" x 16"	SMR-SB-10R-BLK-ST
12 lbs	8" x 18"	SMR-SB-12R-BLK-ST

8-Peg Spyder Apron Rack With Glove Holder

(8 Aprons / 3 Sets of Gloves)
SMA-SAR8G



Lead Apron Wall Rack

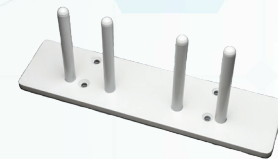


With 5 Full Swing Arms
SMA-F5S

5 Aprons, Arms Swing Right
SMA-SA5R
or Left
SMA-SA5L

Wall-Mounted Radiation Apron Racks

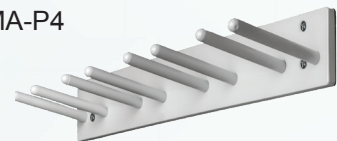
(2 Pegs / 1 Apron)
SMA-P1



(4 Pegs / 2 Aprons)
SMA-P2

Wall-Mounted Radiation Apron Racks

(8 Pegs / 4 Aprons)
SMA-P4



(14 Pegs / 7 Aprons) SMA-P7
(18 Pegs / 9 Aprons) SMA-P9

8-Peg Mobile Leaded Apron Rack

(8 Aprons)
SMA-SAR8



Radiation Apron Hanger



Metal Construction
SMA-MCHANGER



Wall Mounted Apron + Glove Rack SMA-821

Garment Style Mobile 10-Arm Apron Rack

(10 Aprons)
SMA-MSA10



Chrome Wire Apron Hangers



Open Top - SMA-OLHANGER
Closed Top - SMA-CLHANGER

Mobile Radiation Apron Wall Rack

(Includes 5 apron hangers)
SMA-MAR36



(Up to 300 lbs.)
SMA-MAR48

Wall-Mounted Radiation Apron Racks



SMA-820C
Holds one apron and one pair of gloves



Wall Mounted Towel Bar Apron Rack - 2 Glove SMA-ARG-110

Mobile Multiple Apron Hanger With 10 Swing Arms

(10 Aprons)
SMA-M10S-HB



Wall Mounted Towel Bar Apron Rack - 4 Glove SMA-ARG-115



SMR

Stevens-Moon Radiology



The Easiest Apron Tracking Platform



MULTI-SURFACE CLEANER AND DISINFECTING WIPES

Kills Bacteria & Viruses including SARS & Human Coronavirus. Bleach Free, Fragrance Free, Streak Free & Non-Scratch.

Stevens-Moon Radiology
10187 Bergin Rd.
Howell, MI 48843
810-632-6000

www.stevensmoon.com

Stevens-Moon, a Michigan Company

Stevens-Moon 2025